

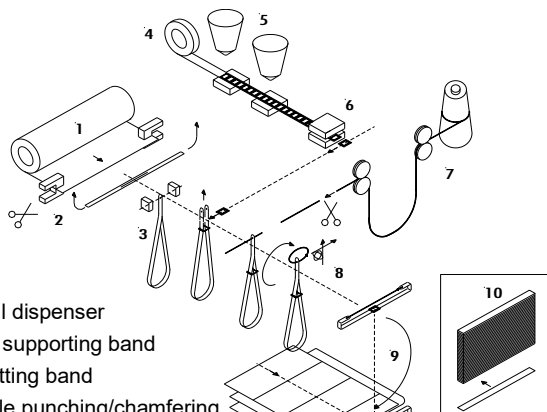
MONA

Fully automatic machine to produce and mount date slides on to Wall Calendars



The MONA produces fully automatic date slides and mounts them onto wall calendars.

OPERATING PROCESS



- 1 Foil dispenser for supporting band
- 2 Cutting band
- 3 Hole punching/chamfering
- 4 Foil dispenser for date frame
- 5 1 or 2 pad-printing stations
- 6 Punching date frame
- 7 Dispenser for elastic thread
- 8 Thread knotting/cutting
- 9 Mounting of date slide onto calendar
- 10 Mounting of date slide onto cardboard strip

The date slide, existing from three parts, is produced and mounted fully automatic.

Products	wall calendars, three- or multiple-months calendars
Format	width: 200 – 420 mm length: 300 – 1000 mm (with automatic feeding/delivery) from 1000 mm up (Inline or hand feeding/delivery only)
Date frame	standard frame in 3 sizes: S12, S16 and S20 (optional frame on request)
Frame print	pad printing method, one and two colours all available colours of pad printing inks
Material	band und date frame non-rigid: transparent PVC film Thread: elastic thread 160 % stretch
Operating Mode	Inline in production line with or without automatic delivery stand-alone with automatic feeding and delivery
Operator	50 – 200 % manpower (depending on operating mode)
Output	max. 2400 pieces/h
Change-over time	15 – 60 minutes (to change format and printing ink)
Technical data	dimensions 4'430 x 1'560 x 2'000 mm (L x W x H) weight ca. 2'200 kg

INTERESTING FEATURES

- Customized date frames for advertising
- Band, date frame and elastic thread are fix mounted with each other
- Production of date slide on cardboard strip or back wall
- **3 years guarantee**

